

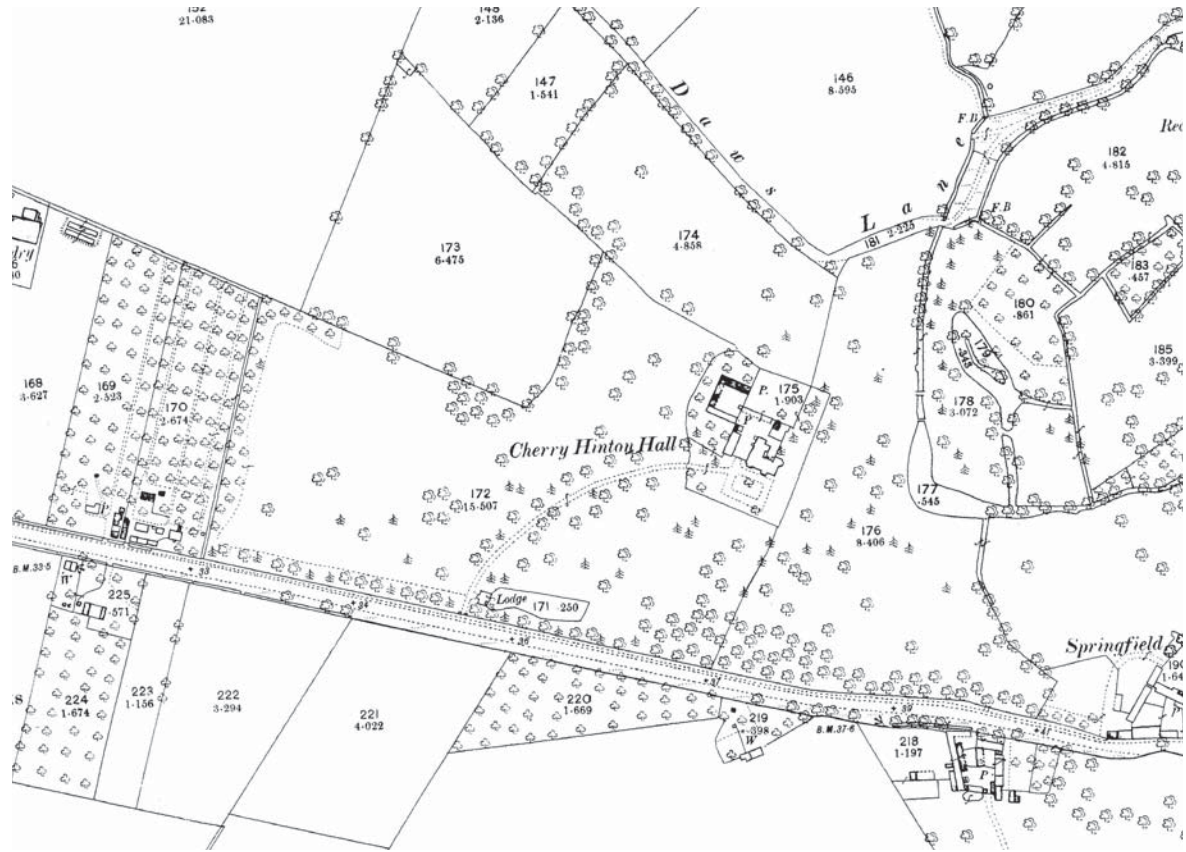


*Landscape Sketch Proposal*  
ref: 519\_01(RP)001 P3  
March 2010

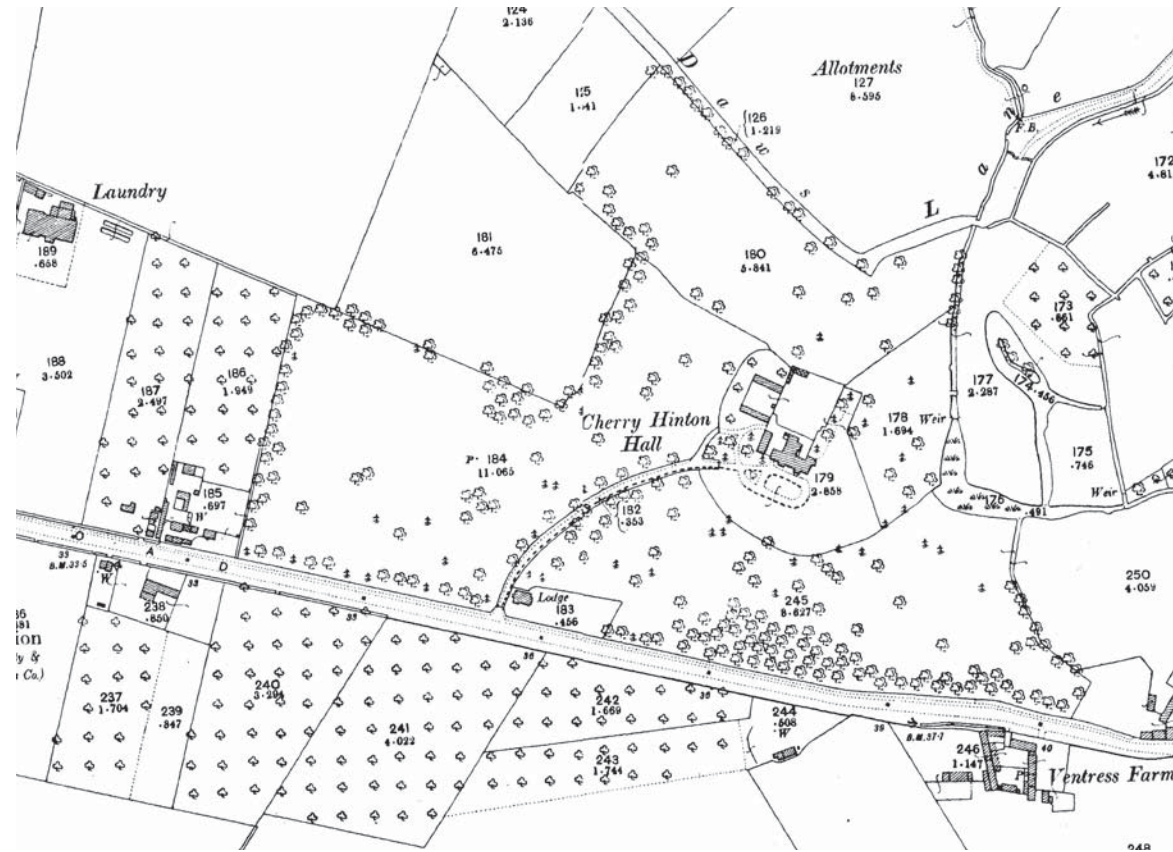
**Cherry Hinton Hall**  
Cambridge Council

---

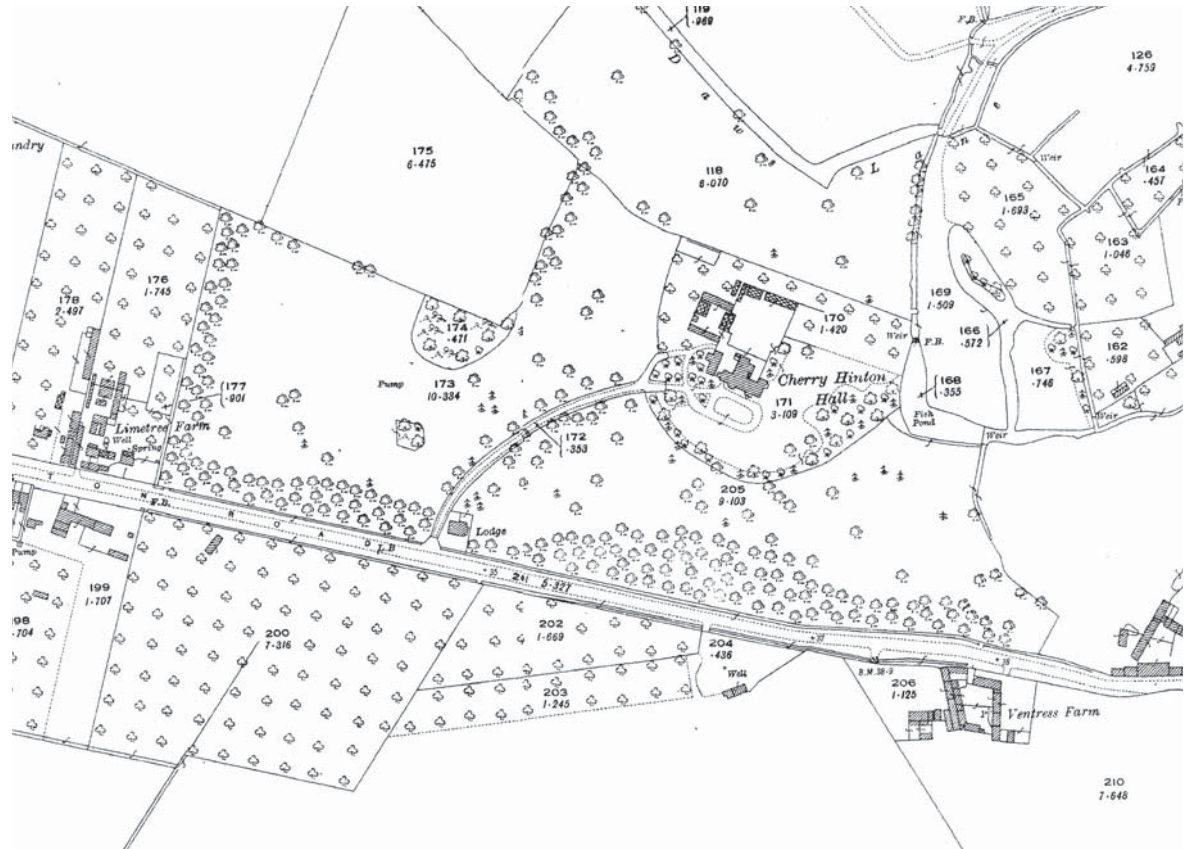
**Robert Myers**  
Associates  
Landscape Architecture



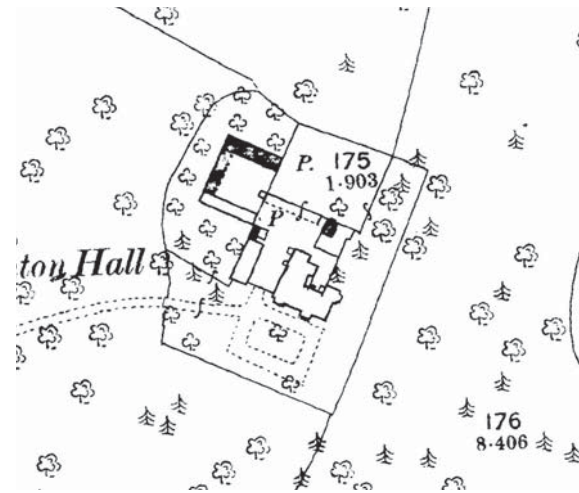
1888 Historic Plan



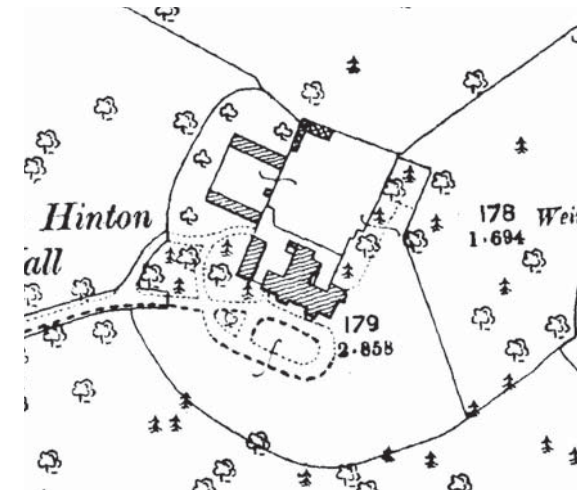
1903 Historic Plan



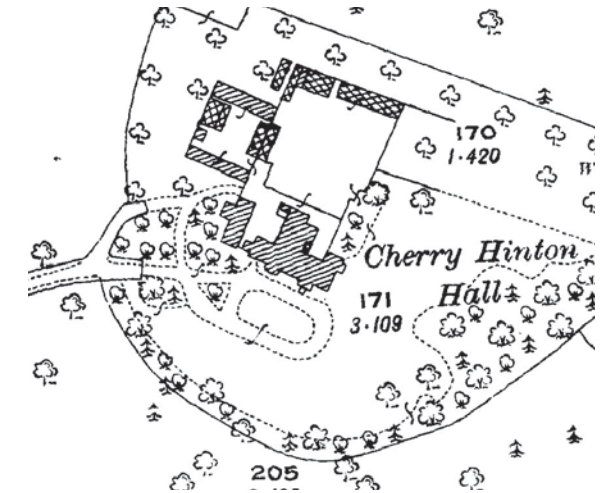
1927 Historic Plan



1888 Historic Plan - detail



1903 Historic Plan - detail



1927 Historic Plan - detail

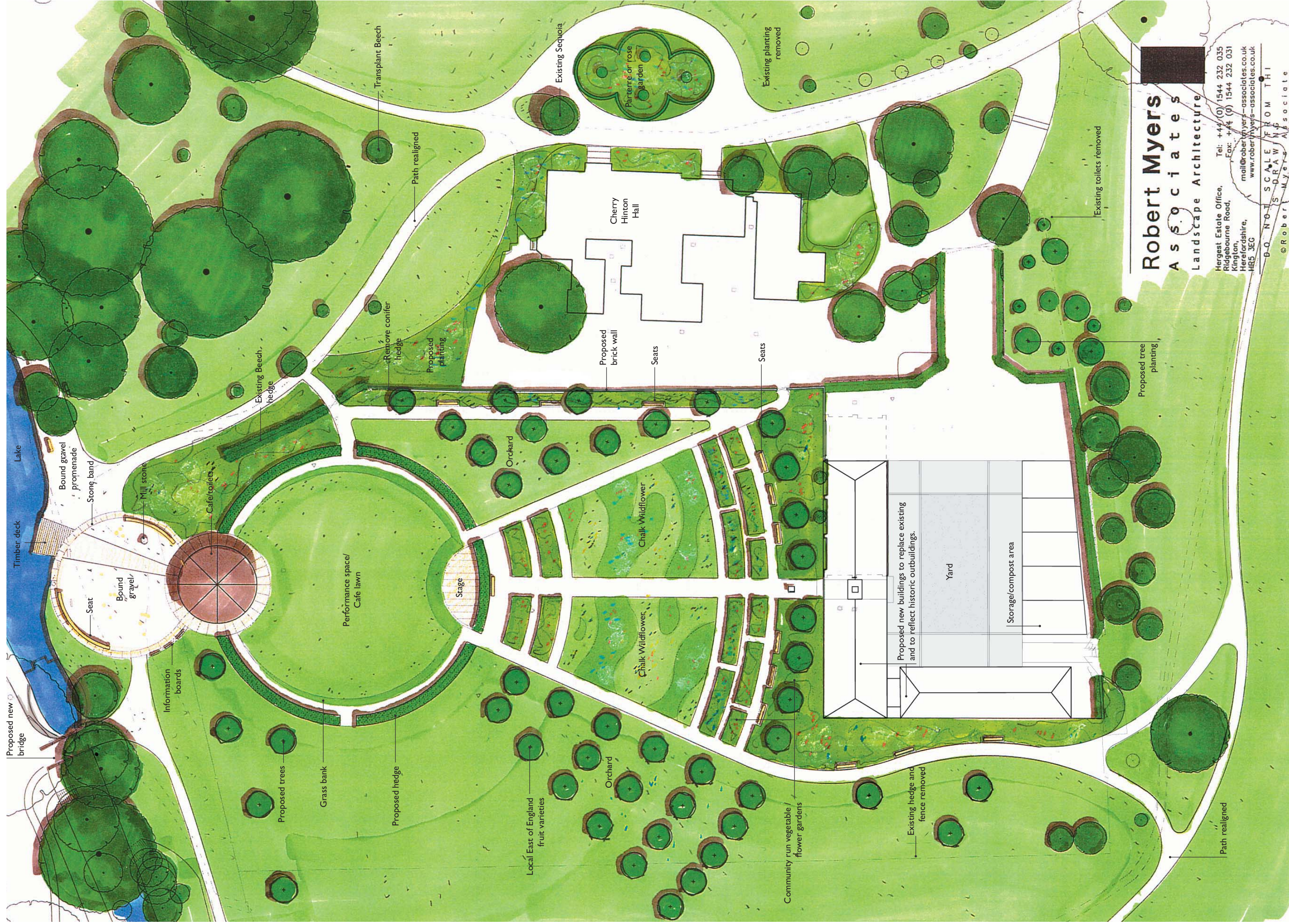


## Design Concept

### The Masterplan Aims:

- To retain the existing character and uses of the park, whilst improving its fabric, facilities and biodiversity.
- To restore the historic setting of the Hall building and recreate the sense of a residence within a parkland. To improve the visibility of the Hall by removing the dense planting on its South side, and restore something of the original carriage sweep and formal planting, possibly a rose garden.
- To develop the former propagation centre area as a public space at the heart of the park, incorporating a flexible events space, and areas of orchard, wildflower areas and community gardening spaces relating to the former walled gardens of the Hall.
- To improve the quality of the spaces around the weir and improve conditions for paddling, pond-dipping etc.
- To improve seating and access to the water in this important 'hub' area.
- To connect disparate parts of the park with paths and planting, including a circuit route around the park.
- To improve the legibility of paths and routes, cater for 'desire lines' and simplify the path network.
- To spread the provision of WCs and possibly catering concessions across the site, responding to the patterns of use.
- To improve the structure, quality and diversity of the existing woodlands, hedges and tree belts, thinning out where necessary and adding understorey planting and coppice.
- To improve the ecological and visual condition of the ponds area. To dredge the water bodies of silt and remove overhanging vegetation. To thin and replant the woodland areas as necessary to retain biodiversity and structure, and remove ivy from trees. Create glades by opening up the canopy in places. To add aquatic planting to the ponds to improve water quality and soften the engineered pond edges.
- To rationalise seating provision and improve the quality of benches. To improve signage and interpretation and install new litter bins, a dedicated barbecue area etc.





**Robert Myers**  
**Associates**  
 Landscape Architecture

Hergest Estate Office,  
 Ridgebourne Road,  
 Kington,  
 Herefordshire,  
 HR5 3EG  
 Tel: +44 (0)1544 232 035  
 Fax: +44 (0)1544 232 031  
 mail@robertmyers-associates.co.uk  
 www.robertmyers-associates.co.uk

DO NOT SCALE FROM THIS DRAWING  
 © Robert Myers Associate

